



**Wimbledon Road, Camberley**

**£430,000**

  
**MARTIN & CO**

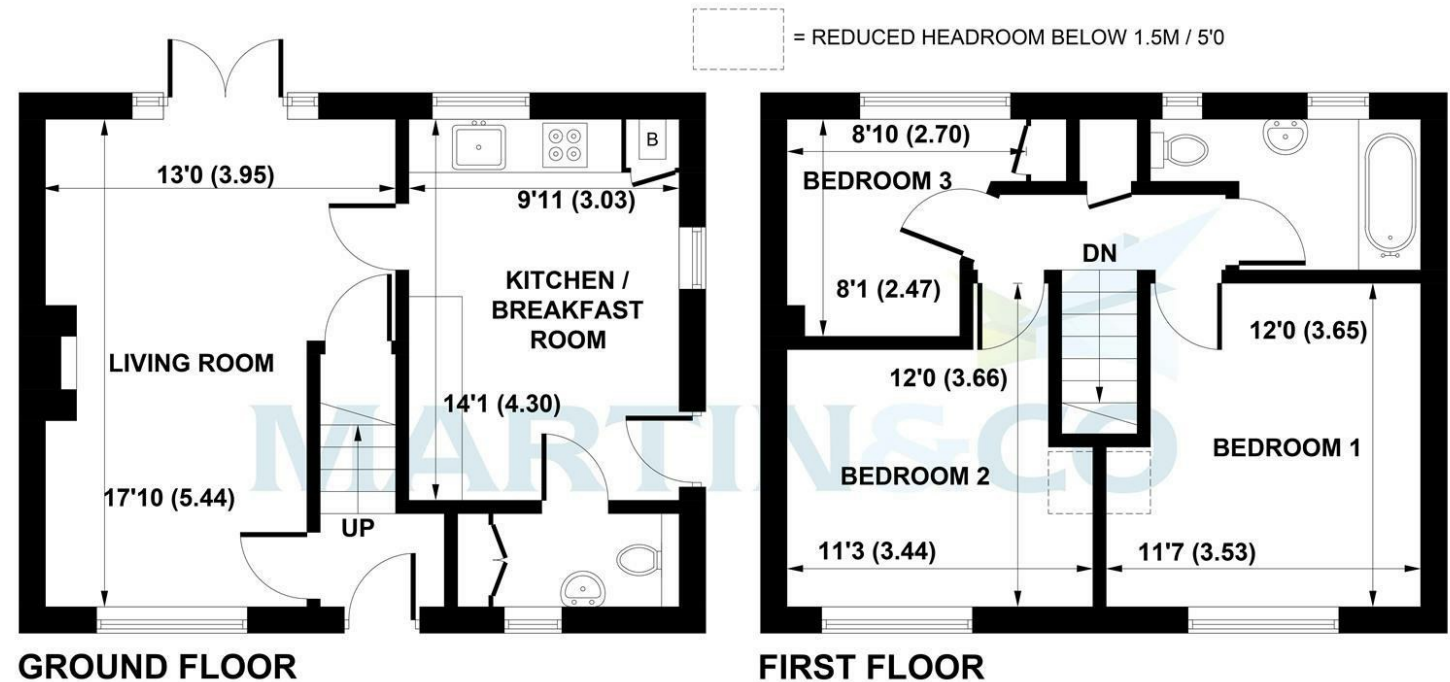
# Wimbledon Road, Camberley

- Large 3 bedroom family home
- 1 Full Family bathroom upstairs and 1 WC downstairs
- Newly Renovated!!
- Large family room
- Newly fitted Kitchen/Dinning Room
- Spacious driveway with ample parking
- Excellent location, Close to all amenities
- Spacious rear garden

Beautifully presented three-bedroom home in prime Camberley location, featuring open-plan living, a south-facing garden, and excellent access to transport, schools, and green spaces.

# Wimbledon Road, Camberley

Approximate Gross Internal Area = 79.1 sq m / 851 sq ft



This plan is for layout guidance only. Not drawn to scale unless stated. Windows and door openings are approximate. Whilst every care is taken in the preparation of this plan, please check all dimensions, shapes and compass bearings before making any decisions reliant upon them. (ID1208378)  
Produced by BlueSky Estate Agency Services on behalf of Martin&Co

Energy Efficiency Rating		Environmental Impact (CO <sub>2</sub> ) Rating	
Very energy efficient - lower running costs	Current	Potential	Very environmentally friendly - lower CO <sub>2</sub> emissions
(92 plus) <b>A</b>			(92 plus) <b>A</b>
(81-91) <b>B</b>			(81-91) <b>B</b>
(69-80) <b>C</b>			(69-80) <b>C</b>
(55-68) <b>D</b>			(55-68) <b>D</b>
(39-54) <b>E</b>			(39-54) <b>E</b>
(21-38) <b>F</b>			(21-38) <b>F</b>
(1-20) <b>G</b>			(1-20) <b>G</b>
Not energy efficient - higher running costs			Not environmentally friendly - higher CO <sub>2</sub> emissions
<b>England &amp; Wales</b>	EU Directive 2002/91/EC		<b>England &amp; Wales</b>
			EU Directive 2002/91/EC

Energy Efficiency Rating: 79 (Current), 60 (Potential)

Environmental Impact (CO<sub>2</sub>) Rating: 79 (Current), 60 (Potential)

Martin & Co Aldershot Sales  
173 Victoria Road, Aldershot, Hampshire, GU11 1JU  
01252 311974 . aldershot@martinco.com

01252 311974  
<http://www.martinco.com>



**Accuracy:** References to the Tenure of a Property are based on information supplied by the Seller. The Agent has not had sight of the title documents. A Buyer is advised to obtain verification from their Solicitor. Items shown in photographs including but not limited to carpets, fixtures and fittings are not included unless specifically mentioned within the sales particulars. They may however be available by separate negotiation. Buyers must check the availability of any property and make an appointment to view before embarking on any journey to see a property. No person in the employment of the agent has any authority to make any representation about the property, and accordingly any information given is entirely without responsibility on the part of the agents, sellers(s) or lessors(s). Any property particulars are not an offer or contract, nor form part of one. **Sonic / laser Tape:** Measurements taken using a sonic / laser tape measure may be subject to a small margin of error. **All**

**Measurements:** All Measurements are Approximate. **Services Not tested:** The Agent has not tested any apparatus, equipment, Fixtures and Fittings or services and so cannot verify that they are in working order or fit for the purpose. A Buyer is advised to obtain verification from their Solicitor or Surveyor.

